

## *Advanced Water Cooled MIG Welding Torch*

# *BLUE TORCH*

## OWNER'S MANUAL 『Parts List』

WTAW400-SUT...1U5986

## *WTAW400-SUT*

### Technical Data

Rated Current : 400A (MIG)

Duty Cycle : 100%(Pulse MIG、MIG)

Wire Size : 1.2mm、1.6mm

3/64"、1/16"

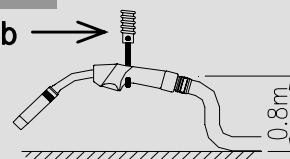
(1.2mm / 3/64" Tip is standard.)

Torch Length : 3.0m/10ft

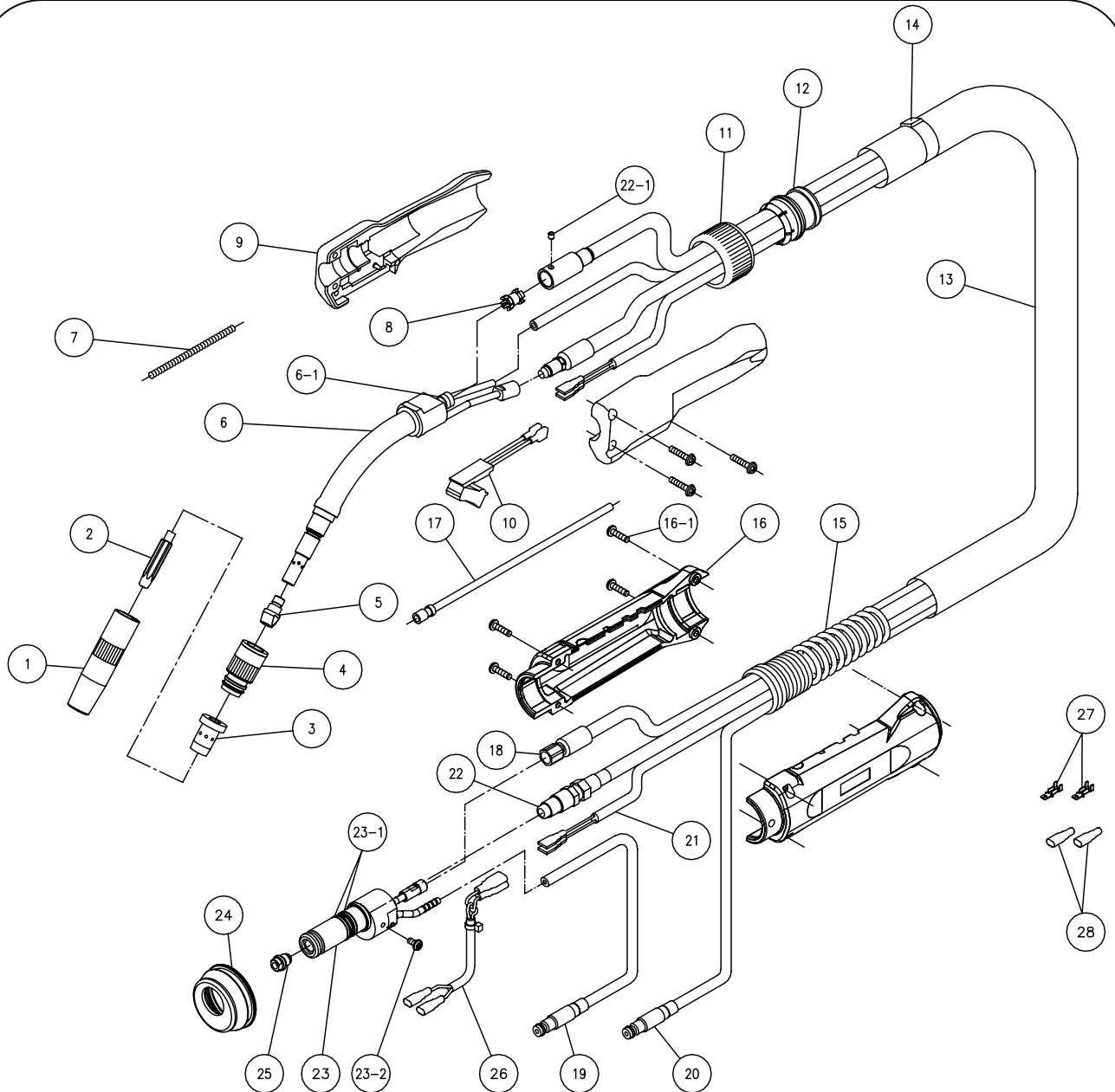
Net Weight : 2.7kg/6.0lb

Weight at Operating : 1.2kg/2.6lb

Cooling Method : Water Cooled

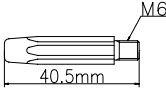


# Standard Parts List

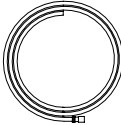


No.	Part Description	Part No.	Remarks	No.	Part Description	Part No.	Remarks
	Nozzle	U5377G01	I.D.17mm		Plastic Liner		
	Contact Tip	K980B20	Aluminum 1.2mm / 3/64"		3.0m	U4432G02	1.0 ~ 1.2mm / .040" ~ 3/64"
	Orifice	U4173G02			Power Cable		
	Insulator	U5626X00			3.0m	U5626D00	
	Tip Nut	U5626M01			Water Out Hose	U5626F00	
	Torch Body	U5626B00	R100, 45 °		Water In Hose	U5626G00	
-1	O-Ring	3574-001	S9	①	Switch Cord	U5626H00	
	Inner Liner	U5626M02		②	Conduit	U5626J00	
	Center Guide	U5626M03		②-1	Bolt with hole	4739-348	M4 × 5
	Handle	U5626P00		③	Power Fitting	U5986L00	For "NO.5"
	Trigger	U5626Q00	With Switch	③-1	O-Ring	100-0819	JASO-1016(4D)
	Lock Ring	U5359G01		③-2	Small Screw	100-0297	M4 × 8
	End Joint	U5626R01		④	Rubber Sleeve	U5972G01	
	Hose Sheath	U5626R02		⑤	Wire Guide	U5984G02	1.2mm / 3/64"
	Binder	4739-606		⑥	Switch Cord	U5972F00	
	Spring	U5626M04		⑦	Terminal	100-0820	LOM-21T-187
	Cable Support	U5626K00		⑧	Cap	100-0821	253224
-1	Small Screw	100-0307	M4 × 18				

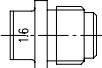
# Optional Parts List

Contact Tip	
	MIG-Tip (Standard)
Wire Size	
1.2mm / 3/64"	K980B20
1.6mm / 1/16"	K980B21

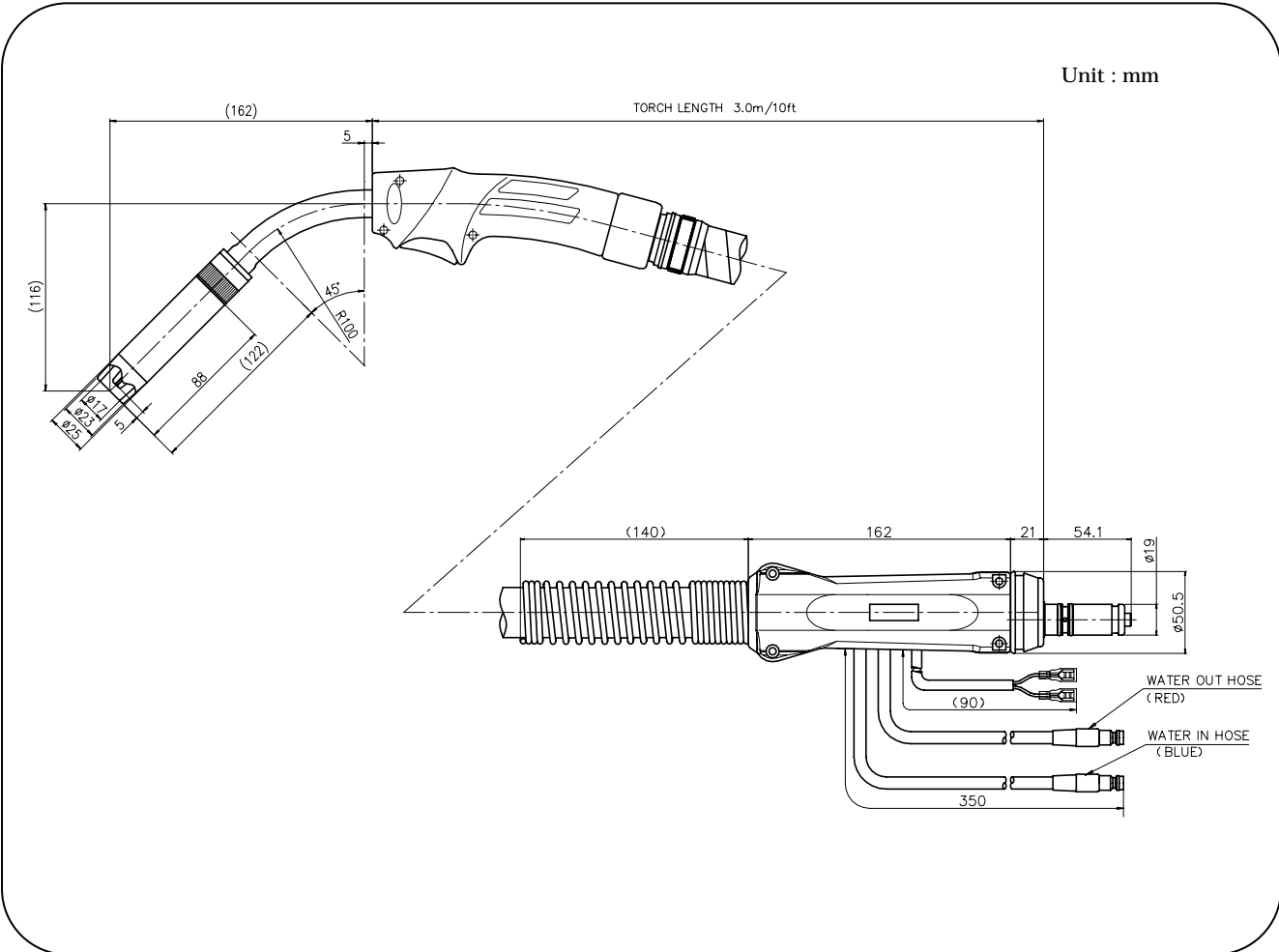
Plastic Liner		
Wire Size	Length	Part No.
1.0 ~ 1.2mm .040" ~ 3/64"	3.0m/10ft	U4432G02
1.6mm 1/16"	3.0m/10ft	U4432G04



Wire Guide	
Wire Size	Part No.
1.6mm / 1/16"	U6000G02

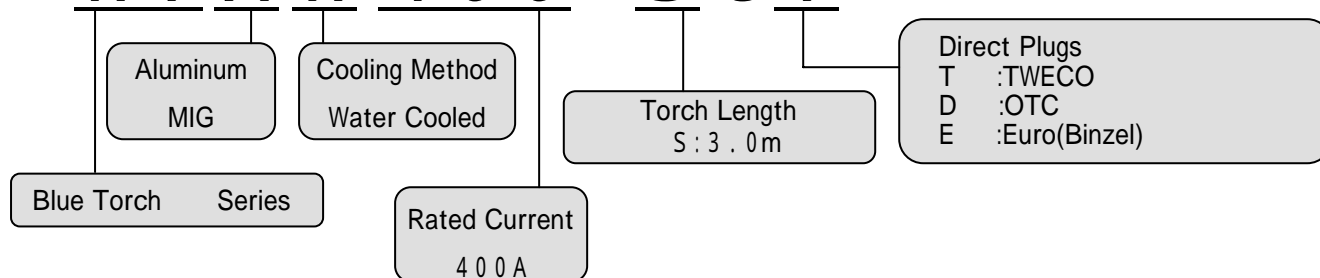


# External View



## Torch Type

# WTA W 400 - SUT



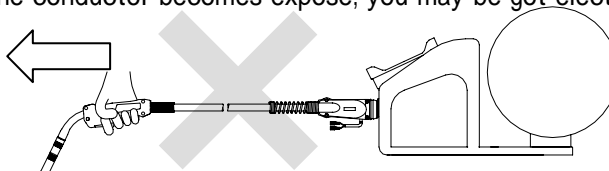
## Product Line of OTC Blue Torch Series

Model	WTA200-SUT	WTA300-SUT	WTAW400-SUT
Rated Current	200A	300A	400A
Duty Cycle	30% (Pulse MIG) / 60% (MIG)	30% (Pulse MIG) / 50% (MIG)	100% (Pulse MIG, MIG)
Wire Size (mm / inch)	(1.0 / .040") 1.2 / 3/64"	(1.0 / .040") 1.2 / 3/64" (1.6 / 1/16")	1.2 / 3/64" (1.6 / 1/16")
Torch Length	3.0m / 10ft	3.0m / 10ft	3.0m / 10ft
Net Weight	2.5kg / 5.5lb	3.0kg / 6.6lb	2.7kg / 6.0lb
Cooling Method	Air Cooled	Air Cooled	Water Cooled

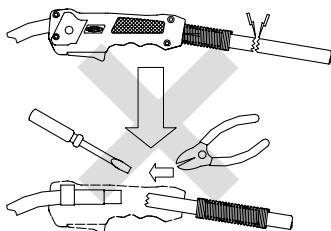
In case of using wire size in the parenthesis, separate sale items are required.

## Attention

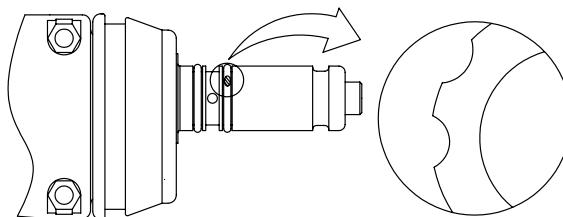
Do not pull or move the wire feeder with welding torch, otherwise breaking of the power cable and the cable coating would be tear. If the conductor becomes expose, you may be got electric shocked.



Exchange the power cable when it is damaged. Do not disassemble or repair on damping part.



In the case of damaging the O-ring, please exchange it. If the damaged O-ring is used as it is, it may cause welding defect.



**DAIHEN Corporation**  
 4-1, Koyochonishi,  
 Higashinada-ku, Kobe  
 Hyogo, 658-0033, Japan  
 Phone : +81-78-275-2004  
 Fax : +81-78-845-8158

**DAIHEN, INC.**  
**DAYTON OFFICE**  
 1400 Blauser Drive  
 Tipp City, OH 45371, U.S.A  
 Phone : +1-937-667-0800  
 Fax : +1-937-667-0885

**OTC DAIHEN EUROPE**  
**GmbH.**  
 Krefeder Strasse 677  
 D-41066 Mönchengladbach,  
 F.R. GERMANY  
 Phone : +49-2161-6949710  
 Fax : +49-2161-6949711

**OTC (Taiwan) Co., Ltd.**  
 No.63-4, Nan Yuan 2 Rd.,  
 Chung Li, Taoyuan Hsien,  
 Taiwan R.O.C.  
 Phone : +886-3-461-3962  
 Fax : +886-3-434-2394

**OTC DAIHEN Asia Co., LTD.**  
 60/86 Moo 19, Navanakorn  
 Industrial Estate Phase 3,  
 Klong Nueng, Klong Luang,  
 Pathumthani 12120, Thailand  
 Phone : +66-2-909-4163  
 Fax : +66-2-909-4166

**OTC Industrial (Shanghai)**  
**Co., Ltd.**  
 7G Majisty Buiding, 138 Pu  
 Dong Da Dao Shanghai The  
 People's Republic of China  
 Post Code: 200120  
 Phone : +86-21-58828633  
 Fax : +86-21-58828846