

Advanced Air Cooled MIG Welding Torch

BLUE TORCH

OWNER'S MANUAL 『Parts List』

WTA200 - SUT . . . 1U5984

WTA200 - SUT

Technical Data

Rated Current : 200A (MIG)

Duty Cycle : 30% (Pulse MIG)、60% (MIG)

Wire Size : 1.0mm、1.2mm

.040"、3/64"

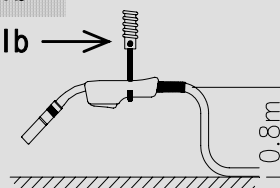
(1.2mm / 3/64" Tip is standard.)

Torch Length : 3.0m/10ft

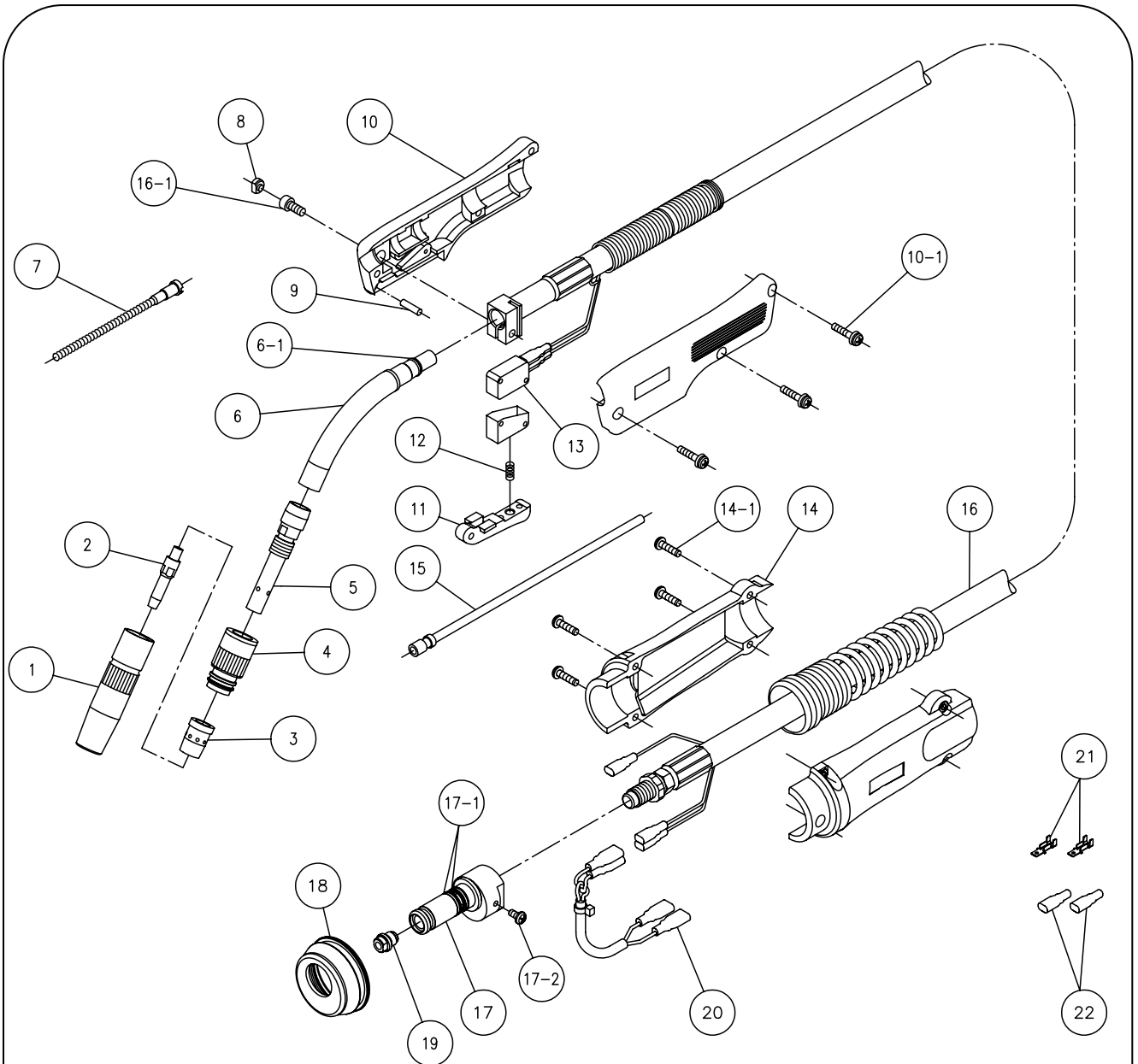
Net Weight : 2.5kg/5.5lb

Weight at Operating : 0.9kg/2.0lb

Cooling Method : Air Cooled

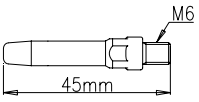


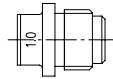
Standard Parts List



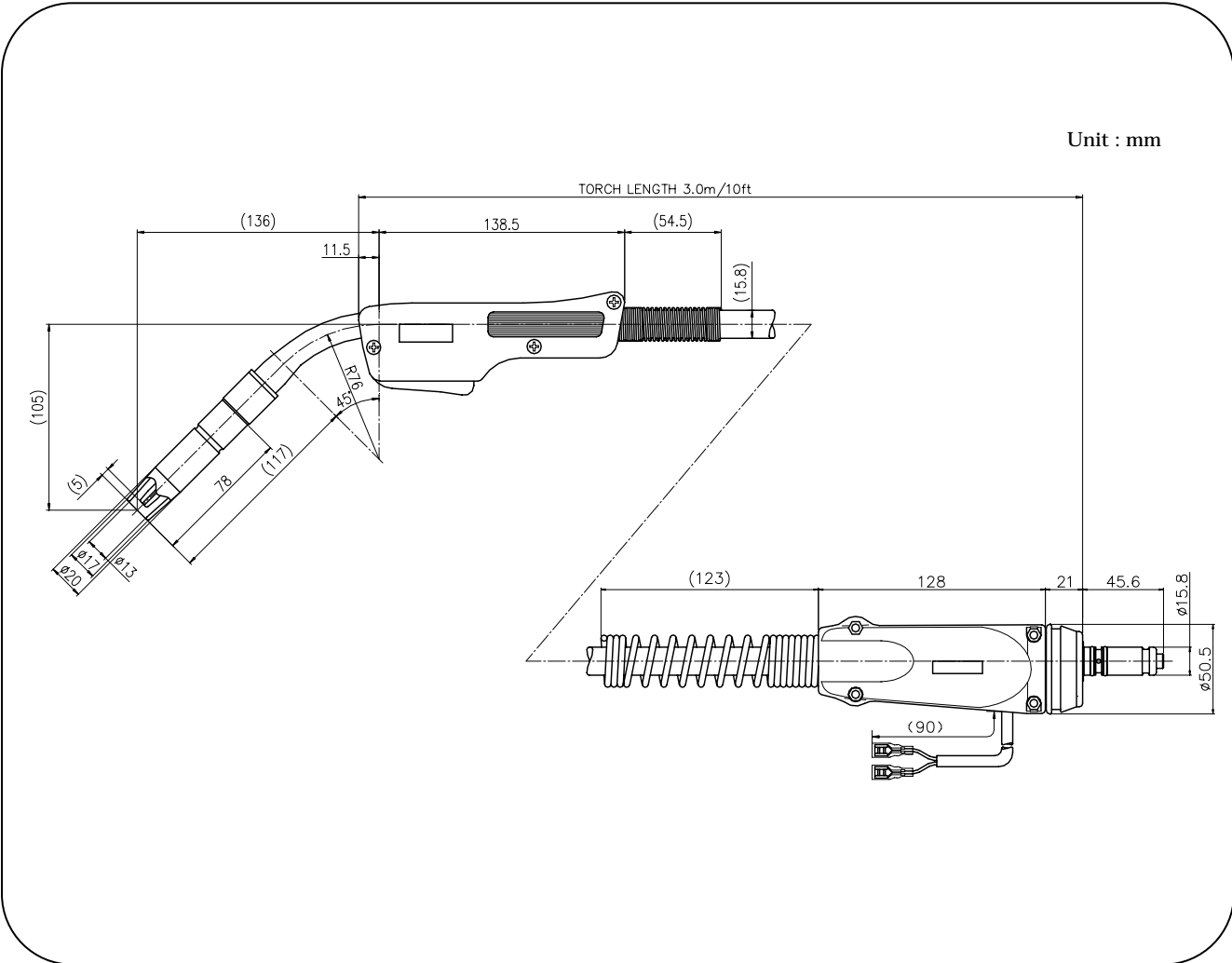
No.	Part Description	Part No.	Remarks	No.	Part Description	Part No.	Remarks
	Nozzle	U4544F01	I.D.13mm		Cable Support	U5035K00	
	Contact Tip	K980C40	Aluminum 1.2mm / 3/64"	-1	Small Screw	100-0306	M4 x 16
	Orifice	U4167G02			Plastic Liner		
	Insulator	U4167L00			3.0m/10ft	U4432G02	1.0~1.2mm / .040" ~3/64"
	Tip Body	U5632G01			Power Cable		
	Torch Body	U5632B00	R76, 45 °		3.0m/10ft	U5344D00	
-1	O-Ring	3574-001	S9	-1	Bolt with hole	100-0309	M5 x 12
	Inner Liner	U5632G02			Power Fitting	U5972E00	For "NO.4"
	Cap	U5341G01		-1	O-Ring	100-0818	AS-014(4D)
	Flat Pin	100-0311		-2	Small Screw	100-0297	M4 x 8
	Handle	U5030G00			Rubber Sleeve	U5972G01	
-1	Small Screw	100-0307	M4 x 18		Wire Guide	U5984G02	1.2mm / 3/64"
	Trigger	U5030E01			Switch Cord	U5972F00	
	Spring	U2853C04		②	Terminal	100-0820	LOM-21T-187
	Micro Switch	U4167T00	With Cover	②	Cap	100-0821	253224

Optional Parts List

Contact Tip	
	A-Tip (Standard)
Wire Size	
1.0mm (.040")	K980C39
1.2mm (3/64")	K980C40

Wire Guide	
Wire Size	Part No.
1.0mm (.040")	U6000G01
	

External View



Torch Type

WTA 200 - SUT



Direct Plugs

T :TWECO
 D :OTC
 DB :OTC Black Torch*1
 P :Panasonic
 E :Euro(Binzel)
 M :Miller
 MS :Miller(Separate Gas Hose)
 L :Lincoln
 HT :Hitachi

*1 OTC black torch Power cable adapter, guide adapter and outlet guide are not attached. The parts that you use now or new parts are required. If new parts are required, order parts below separately.

- Power Cable Adapter U2853G00
- Guide adapter U785C13 (For CM[H]-23Series, CM[H]-14Series)
U5204J01 (For CM-741)
- Outlet Guide (1.2 / 3/64") U2586F01 (For CM[H]-23Series, CM[H]-14Series)
U2962M03 (For CM-741)

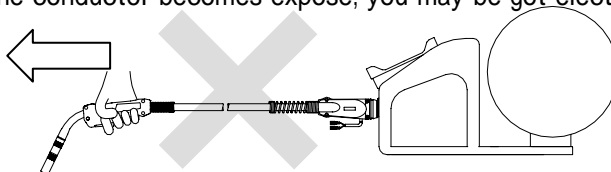
Product Line of OTC Blue Torch Series

Model	WTA200-SUT	WTA300-SUT	WTA400-SUT
Rated Current	200A	300A	400A
Duty Cycle	30%(Pulse MIG)/ 60%(MIG)	30%(Pulse MIG)/ 50%(MIG)	100%(Pulse MIG, MIG)
Wire Size (mm / inch)	(1.0 / .040") 1.2 / 3/64"	(1.0 / .040") 1.2 / 3/64" (1.6 / 1/16")	1.2 / 3/64" (1.6 / 1/16")
Torch Length	3.0m / 10ft	3.0m / 10ft	3.0m / 10ft
Net Weight	2.5kg / 5.5lb	3.0kg / 6.6lb	2.7kg / 6.0lb
Cooling Method	Air Cooled	Air Cooled	Water Cooled

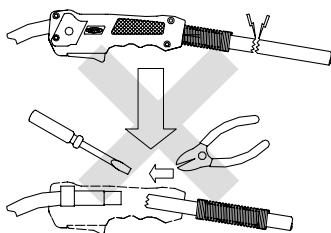
In case of using wire size in the parenthesis, separate sale items are required.

Attention

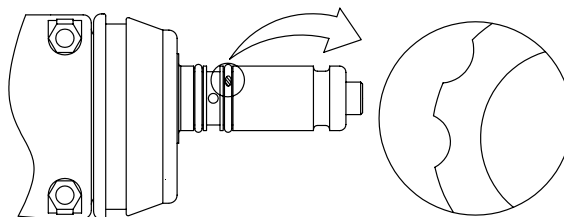
Do not pull or move the wire feeder with welding torch, otherwise breaking of the power cable and the cable coating would be tear. If the conductor becomes expose, you may be got electric shocked.



Replace the power cable when it is damaged. Do not disassemble or repair on damping part.



In the case of damaging the O-ring, please replace it. If the damaged O-ring is used as it is, it may cause welding defect.



DAIHEN Corporation
 4-1, Koyochonishi,
 Higashinada-ku, Kobe
 Hyogo, 658-0033, Japan
 Phone : +81-78-275-2004
 Fax : +81-78-845-8158

DAIHEN, INC.
DAYTON OFFICE
 1400 Blausen Drive
 Tipp City, OH 45371, U.S.A
 Phone : +1-937-667-0800
 Fax : +1-937-667-0885

OTC DAIHEN EUROPE
GmbH.
 Krefeder Strasse 677
 D-41066 Mönchengladbach,
 F.R .GERMANY
 Phone : +49-2161-6949710
 Fax : +49-2161-6949711

OTC(Taiwan) Co.,Ltd.
 No.63-4,Nan Yuan 2 Rd.,
 Chung Li, Taoyuan Hsien,
 Taiwan R.O.C.
 Phone : +886-3-461-3962
 Fax : +886-3-434-2394

OTC DAIHEN Asia Co.,LTD.
 60/86 Moo 19, Navanakorn
 Industrial Estate Phase 3,
 Klong Nueng, Klong Luang,
 Pathumthani 12120, Thailand
 Phone : +66-2-909-4163
 Fax : +66-2-909-4166

OTC Industrial (Shanghai)
Co.,Ltd.
 7G Majisty Buiding, 138 Pu
 Dong Da Dao Shanghai The
 People's Republic of China
 Post Code: 200120
 Phone : +86-21-58828633
 Fax : +86-21-58828846