

Advanced Air Cooled CO₂/MAG Welding Torch

BLUE TORCH II

OWNER'S MANUAL 『Parts List』

WT350RA-15D...1U5870
WT350RA-20D...1U5871
WT350RA-25D...1U5872
WT350RA-30D...1U5910

WT350RA-15D

WT350RA-20D

WT350RA-25D

WT350RA-30D

Technical Data

Rated Current : 350A (CO₂) / 350A (MAG)

Duty Cycle : 60% (CO₂) / 35% (MAG)

Wire Size : 0.9mm、1.0mm、1.2mm、1.4mm

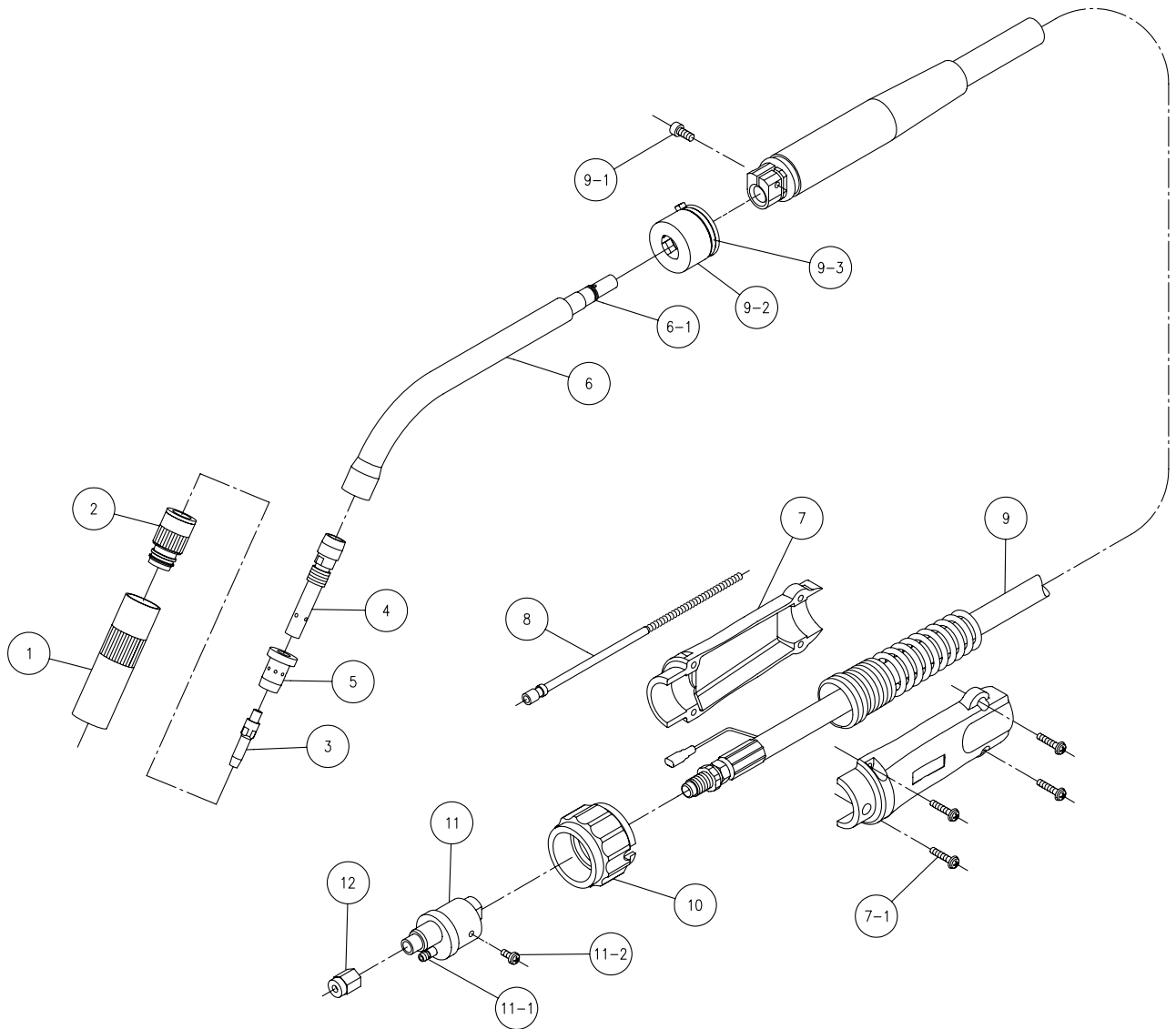
(1.2mm Tip is standard.)

Torch Length : **1.5m** **2.0m** **2.5m** **3.0m**

Net Weight : **2.4kg** **2.7kg** **3.0kg** **3.4kg**

Cooling Method : Air Cooled

Standard Parts List



No.	Part Description	Part No.
①	Nozzle No.10 (I.D.16mm)	U4167G01
②	Insulator	U4167L00
③	Contact Tip (1.2mm)	L7250C04
④	Tip Body	U4167G03
⑤	Orifice	U4167G02
⑥	Torch Body	U5339N00
⑥-1	O-Ring (S9)	3574-001
⑦	Cable Support (with Screw)	U5035K00
⑦-1	Small Screw (M4 × 16)	100-0306
⑧	Liner(0.9~1.2mm)	
	1.5m、2.0m	U5861G01
	2.5m、3.0m	U4170H02

No.	Part Description	Part No.
⑨	Power Cable (Reinforcing Spring is included.)	
	1.5m	U5861D00
	2.0m	U5862D00
	2.5m	U5863D00
	3.0m	U5907D00
⑨-1	Bolt with hole(M5 × 14)	100-0310
⑨-2	Sleeve	U5861D03
⑨-3	SK-Binder	4739-189
⑩	Adapter Nut	U4167F03
⑪	Adapter (with Screw)	U5861F00
⑪-1	O-Ring	3570-125
⑪-2	Small Screw (M4 × 8)	100-0297
⑫	Liner Nut	U4167G06

Torch Type

WT 350RA-15D

Rated Current
(350A)

Clamping position
D: Fixation type
A: Changeable type

CO2/MAG
Blue Torch II Series

Torch Body Type
P: Straight
R: Curved

Torch Length
15: 1.5m
20: 2.0m
25: 2.5m
30: 3.0m

Direct Plugs

D : OTC, Tokin
DB : OTC Black Torch*1
DR : OTC for CM-302
P : Panasonic
E : Euro (Binzel)
M : Miller
MS : Miller (Separate Gas Hose)
H : Hobart (Tweco)
L : Lincoln
FS : DAIDEN FS Series
DM : DAIDEN MOVE Series
HT : Hitchi

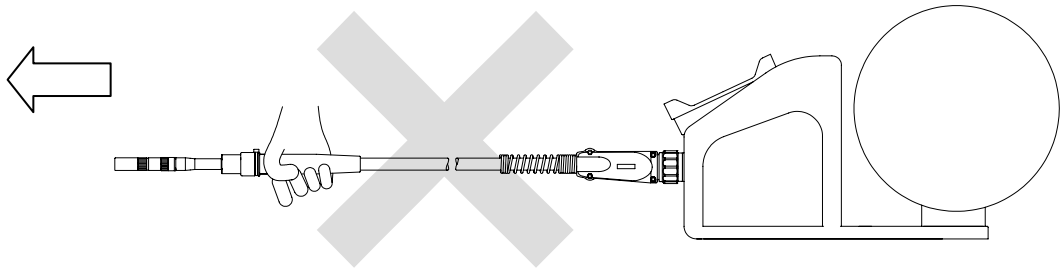
*1 OTC black torch Power cable adapter, guide adapter and outlet guide are not attached. The parts that you use now or new parts are required. If new parts are required, order parts below separately.

- Power Cable Adapter
- Guide adapter
- Outlet Guide (0.9~1.2)
- Outlet Guide (1.2~1.6)

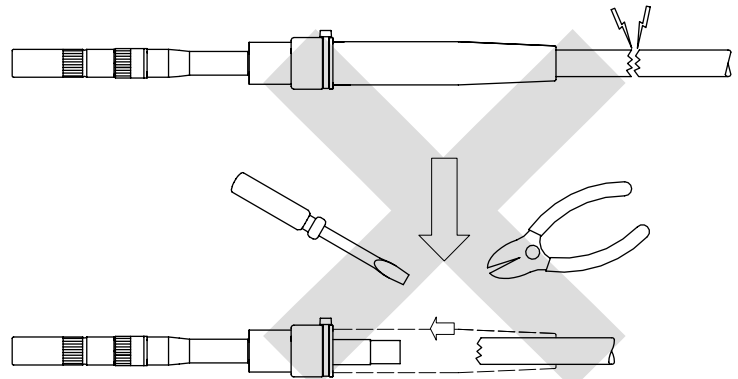
U2853G00
U785C13
U69C34
U69C35

Attention

Do not pull or move the wire feeder with welding torch, otherwise breaking of the power cable and the cable coating would be tear. If the conductor becomes expose, you may be got electric shocked.



Exchange the power cable when it is damaged. Do not disassemble or repair on damping part.



DAIHEN Corporation
5-1, Minamisenrioka,
Settsu-shi, Osaka 566-0021,
Japan
Phone: +81-6-6317-2506,
Fax: +81-6-6317-2583

DAIHEN, INC.
DAYTON OFFICE
1400 Blauser Drive
Tipp City, Ohio 45371, USA
Phone: +1-937-667-0800,
Fax: +1-937-667-0885

OTC DAIHEN EUROPE GmbH.
Krefelder Str. 677, D-41066
Monchengladbach, F.R.
GERMANY
Phone: +49-2161-69-49710,
Fax: +49-2161-69-49711

OTC (Taiwan) Co.,Ltd.
No. 63-4, Nan Yuan 2 Rd.,
Chung Li, Taoyuan Hsien,
Taiwan R.O.C.
Phone: +886-3-461-3962,
Fax: +886-3-434-2394

OTC DAIHEN Asia Co.,Ltd.
60/86 Moo 19, Navanakorn
Industrial Estate Phase 3,
Klong Nueng, Klong Luang,
Pathumthani 12120
Phone: +66-2-909-4163,
Fax: +66-2-909-4166

OTC Industrial (Shanghai) Co.,Ltd.
7G Majesty Building, 138 Pu
Dong Da Dao Shanghai The
People's Republic of China
Post Code: 200120
Phone: +86-21-58828633,
Fax: +86-21-58828846