



Almega Friendly series II

Wireless Teach Pendant WiTP

A Revolution in Robot Teaching!

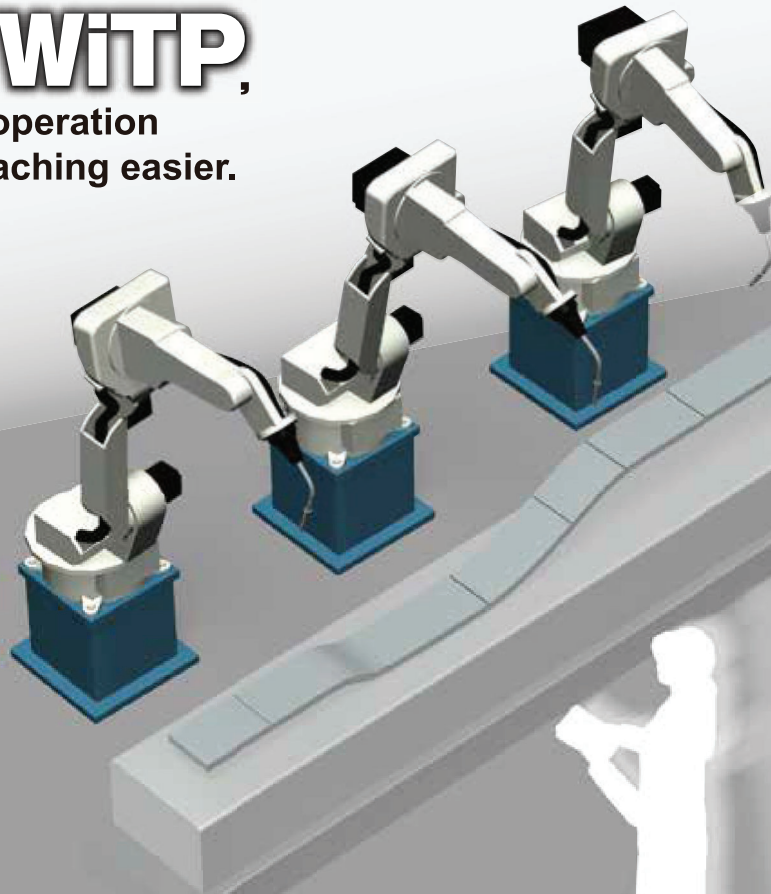


Safe and secure design!

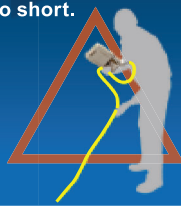
Wireless

With the **WiTP**,
wireless operation
makes teaching easier.

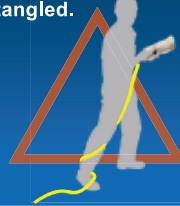
Freed from the troublesome cable, the operator can move about freely while performing teaching tasks.



Cable is too short.



Cable becomes entangled.



Cable becomes snagged.



The cable hinders easy movement.

Features of the WiTP

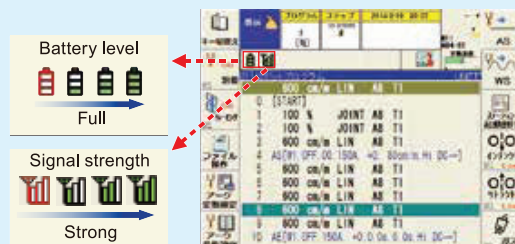
Powerful

Incorporates a high-capacity battery.

The pendant unit contains a lithium-ion battery that provides up to **5 hours of operation**.

Screen icon indicates remaining power.

Battery level and signal strength** are displayed on the pendant screen and can be confirmed at any time.



Wireless design ensures a tidy work space.



Wired teach pendants require inconvenient cable management.

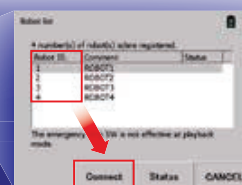


To recharge, simply place the pendant on the cradle. The screen of the WiTP remains usable even during charging.

** Indicates signal strength received by robot.

Flexible

With the **WiTP**,
the operator can manage multiple robots
simply by switching between them.*
The operator can operate FD11 and FD19 by
switching between them.



Switch between multiple robots with the pendant.

To switch between robots, simply select the
desired robot number and perform identification
steps according to the guide.



* Up to 99 units can be registered. Maximum number of simultaneous connections in the same building
is 10 units (Japanese specification).

Safety

Includes a robot maintenance manual.

You can do maintenance work while viewing the robot manual on
the WiTP screen even if the control unit's power is OFF.



Can be used even with depleted battery.

If the battery runs down, simply connect
a cable to continue working.



One-touch connection

Designed for safety

The unit includes the servo block function activated by a robot
emergency stop button and an enable switch.

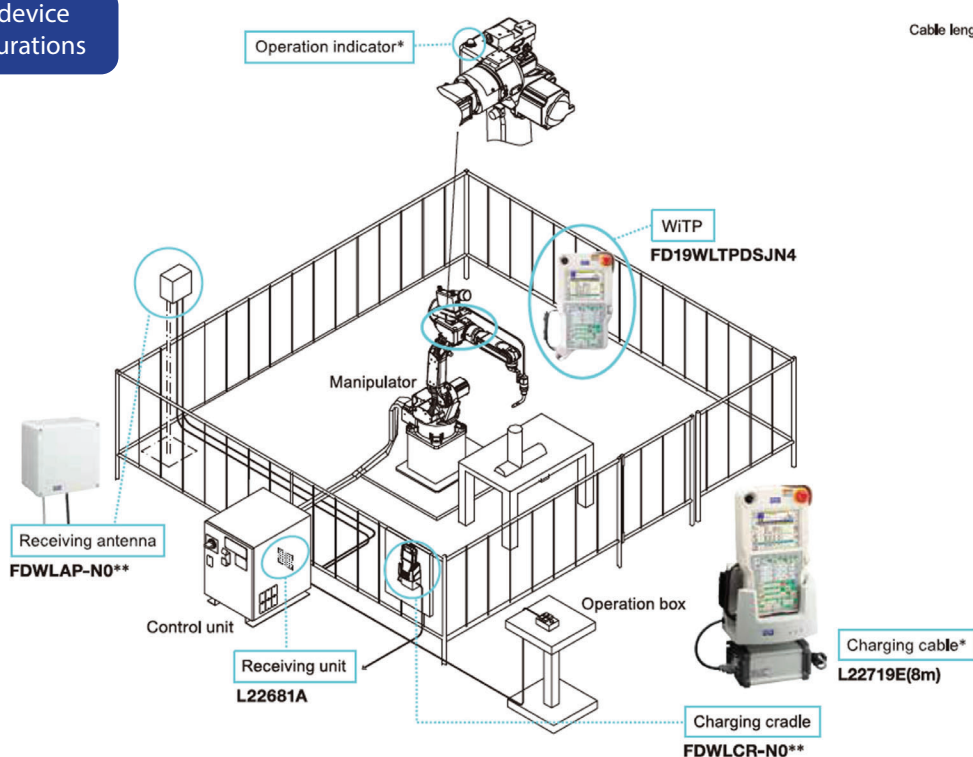


Emergency stop button
Simply press this button to
stop the robot in an
emergency. A blinking lamp
indicates when emergency
stop status is activated.



Enable switch
Power is supplied to the
robot when you push the
enable switch during
teaching operations.

WiTP device configurations



*: Optional
Cable length **: 05: 5 m
15: 15 m

Item	Specifications
Mass (weight)	1350g
Operation time	Up to 5 hours continuous operation*
Full charge time	3 hours (with Teach Pendant powered OFF)*
Fast charge	1 hour (with Teach Pendant powered OFF) Provides about 4 hours of continuous operation. •
Ambient operating temperature	0-40°C
Maxi simultaneous connections in same building**	10 units (Japanese specification)
Functional security level	IEC61508 (SIL 2) ISO13 849 (Cat. 3, PL d)
External memory	USB memory
Wireless standard	802.11a/n
input devices	Touch panel, jog dial
Cradle charge input voltage	AC 80- 264V (1Ø)

* May vary according to ambient operating temperature.

** May vary with distance between antennas and presence of other wireless devices.

In accordance with DAIHEN's policy to make continuing improvements, design and/or specifications are subject to change without notice and without any obligation on the part of manufacture

OTC DAIHEN Website

www.DAIHEN-USA.com

DAIHEN ROBOT Website

www.DAIHEN-robot.com/en



NORTH AMERICA CORPORATE HEADQUARTERS

1400 Blauser Dr, Tipp City OH 45371
Phone: (937) 667-0800
Fax: (937) 667-0885

ATLANTA TECHNICAL CENTER

3135 Medlock Bridge Road
Norcross, GA 30071
Phone: 888-OTC-ROBO
Fax: (937) 667-0885

DETROIT TECHNICAL CENTER

750 Welch Road
Commerce Township, MI 48390
Phone: 888-OTC-ROBO
Fax: (937) 667-0885



Member of DAIHEN Group

This product and the technologies (including software) used in the product are subject to Catch-All Contents:
When exporting any of them, verify the users, applications, etc. according to the applicable laws and regulations
and take appropriate procedures such as applications for export permissions to the Minister of Economy, Trade and Industry if required.