



No.1L7432

## **MODEL: L-7432**

[CO2/MAG Wire Feeder ( for 4 Roll Type)]

## **PARTS LIST**

DAIHEN Corporation

# 1. L-7432 Parts List

## 1.1 Wire Feeder (L-7432) Parts List

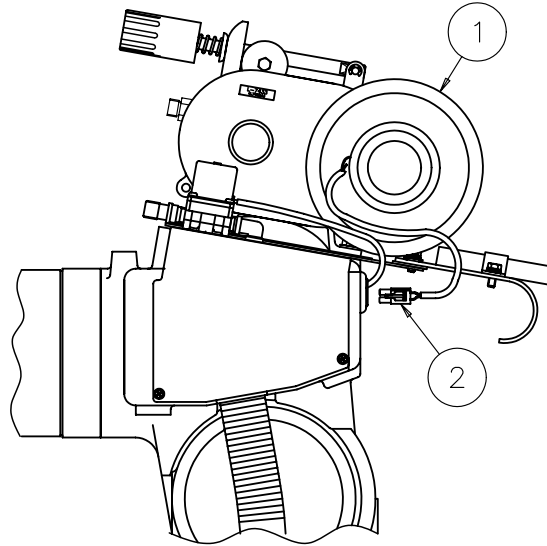


Fig 1. L-7432 Parts List

Table 1. Parts List

No	Parts Number	Description	Q'ty	Remarks
1	L6542A	Wire Feeder Unit	1	Refer to 1.2
2	L7431B	Cable Assy	1	Refer to 2

## 1.2 Wire Feeder Unit (L-6542) Parts List

Table 2. L-6542 Parts List

No	Part Number	Description	Q'ty	Remarks
1	K1123B01	Gear Case	1	
2	4802-006	Print Motor	1	PMEE-12CBB
3	K1123B02	Pinion	1	
3-1	3361-401	CS Type Snap Ring	1	CSTW-10
4	K1123B03	2-Step Gear	1	
5	K1123B04	Geared Output Shaft	1	
6	3361-206	Key	3	4×4×8
7	K1123B05	Bush	2	
8	K1123B06	Insulating Spacer	1	
9	3311-001	Radial Ball Gear	1	№6000ZZ
10	K1821C01	Gear Case	1	
1 1	K1822C02	Insulating Plate	1	
1 2	K1123C04	Insulating Sleeve	1	
1 3	3311-008	Radial Ball Gear	5	№6001LL
1 4	K1822C01	Bracket	1	
1 5	K5112C04	Pressure Roll Holder (1)	1	
1 6	K1822C04	Pressure Roll Holder (2)	1	
1 7	K1821C04	Pressure Roll Pin	2	
1 8	K1821C05	Axis Pin	3	
1 9	3361-404	E-type Snap Ring	6	φ 5
2 0	K5112C05	Pressure Bolt	1	
2 1	U929C16	Pressure Spring	1	
2 2	K1123D01	Pressure Handle	1	
2 3	-	CS Type Snap Ring	1	CSTW-6
2 4	K1123D03	Spring Bearing	1	
2 5	K1123D05	Pressure Nut	1	
2 6	K1822C06	Guide Block	1	
2 7	K970G71	Center Guide	1	For Mild Steel/Stainless
2 8	L6542C01	Feed Shaft	2	
2 9	K1822C10	Spacer	3	
29-1	K1123B07	Spacer	1	

## 1.2 Wire Feeder Unit (L-6542) Parts List (continued)

Table 3. L-6542 Parts List

No	Part Number	Description	Q'ty	Remarks
3 0	L6542C02	Middle Gear	1	
3 1	L6564J	Feed Roll (1.2)	2	For Steel/Stainless 1.2
3 2	L6542M	Pressure Roll	2	For Steel/Stainless 1.2
3 3	K1687D13	Guide Adapter	1	
3 4	U785C09	Spring Plate	1	
3 5	U785C11	Protection Cover	1	
3 6	K1123C08	Remote Stopper	1	
3 7	K5112C06	Bush	1	For ②0
3 8	L7427C01	Insulating Plate	1	
3 9	U1997C06	Insulating Bush	1	
4 0	-	Bolt	2	M8×20 ( W/W&SW )
4 1	L6542E	Wire Straightner	( 1 )	For Steel/Stainless (Optional Accessory)

### ( Optional Accessories )

Table 4. Parts List of Optional Accessories

No	Part Number	Description	Q'ty	Remarks
4 2	L6564F	Feed Roll (0.8)	2	For Steel/Stainless 0.8
4 3	L6564G	Feed Roll (0.9)	2	For Steel/Stainless 0.9
4 4	L6564H	Feed Roll (1.0)	2	For Steel/Stainless 1.0
4 5	L6564K	Feed Roll (1.4)	2	For Steel/Stainless 1.4
4 6	L6564L	Feed Roll (1.6)	2	For Steel/Stainless 1.6

## 1.2 Wire Feeder Unit (L-6542) Parts List (continued)

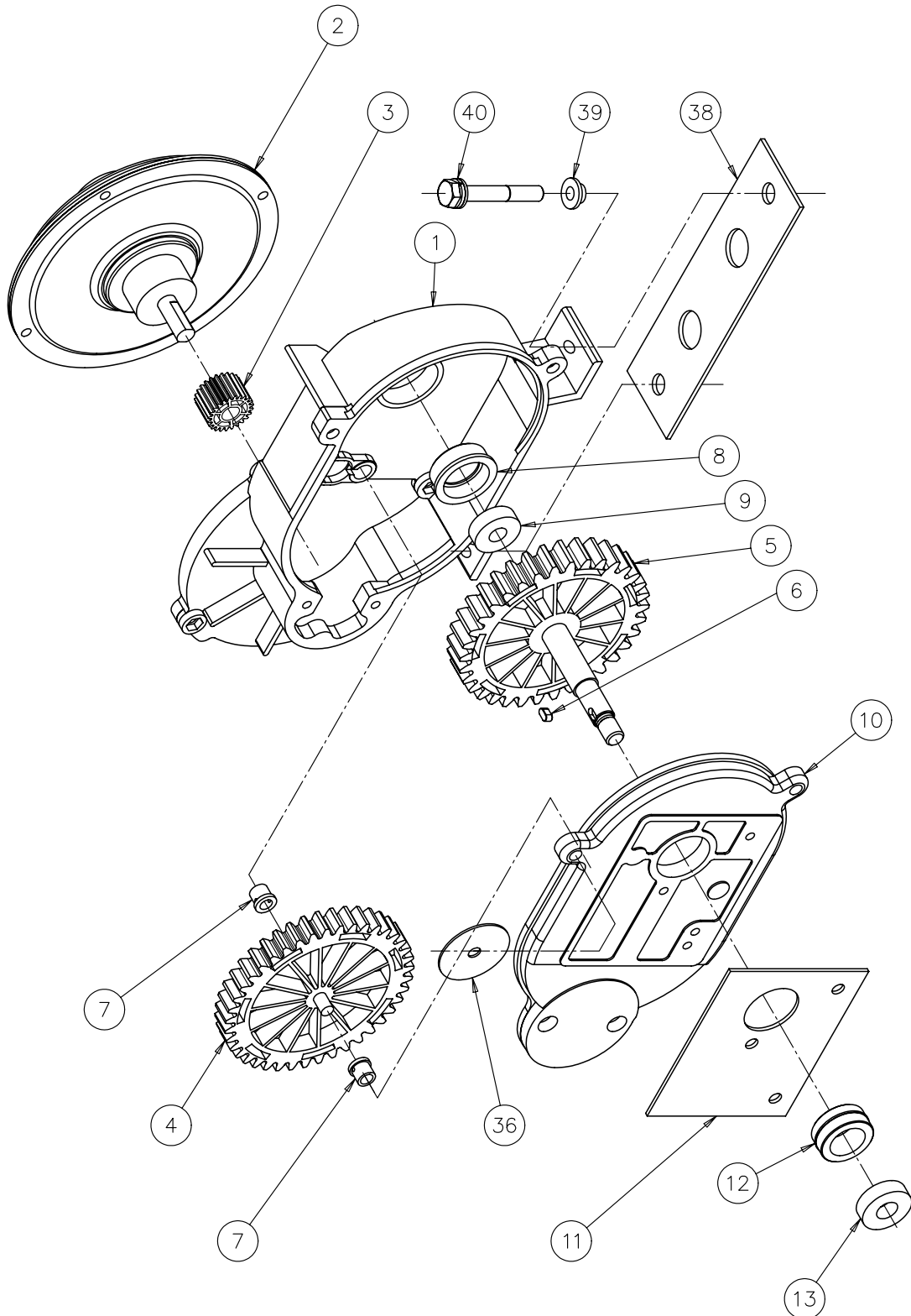


Fig 2. Disassembly Drawing of Wire Feed Reduction Gear Unit

## 1.2 Wire Feeder Unit (L-6542) Parts List (continued)

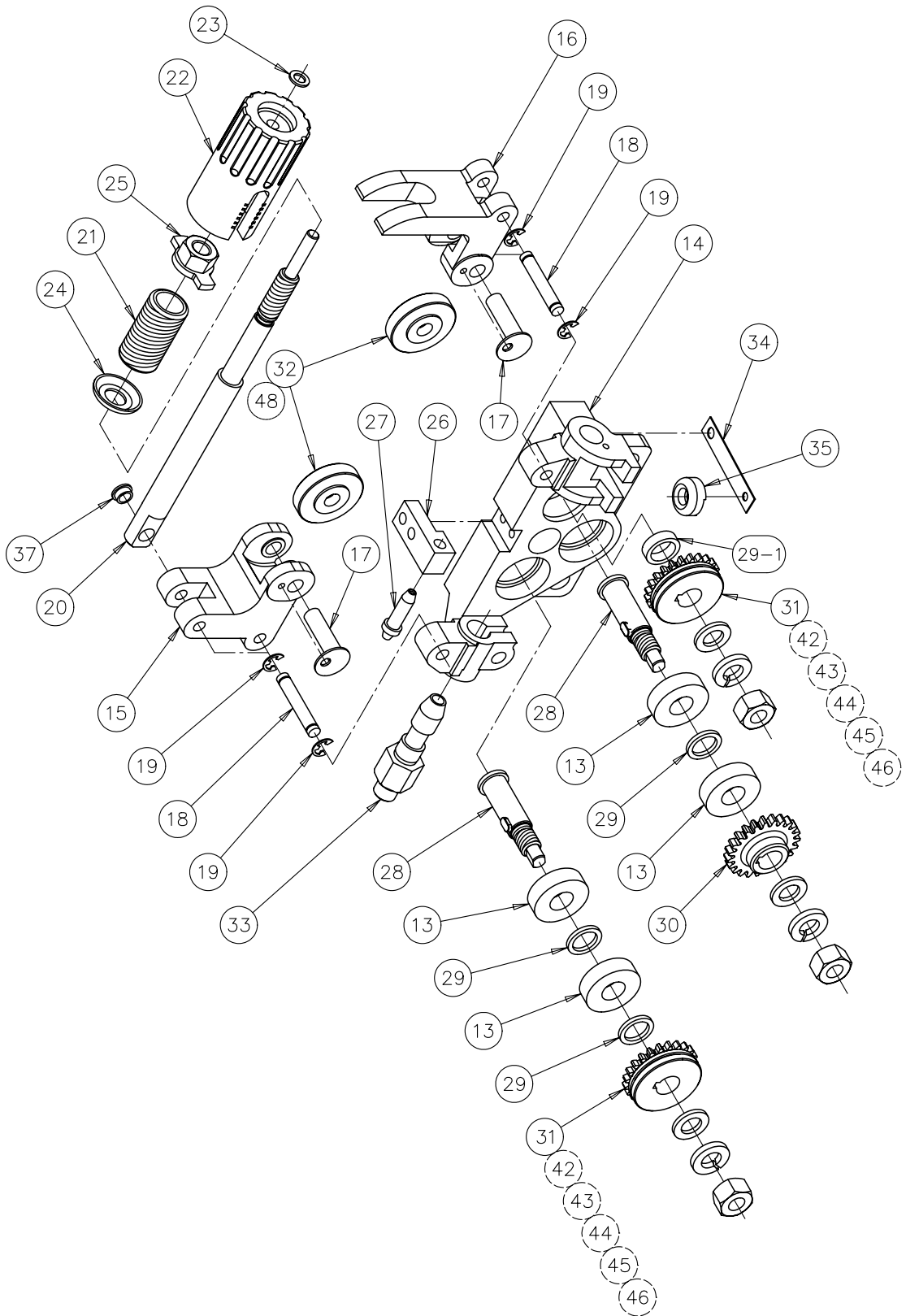


Fig 3. Disassembly Drawing of Wire Feeder and Pressure Parts

## 2. When the bend in a wire is big...

If the bend in a wire is big and the welding is not executed correctly, install wire Straightner

### 2.1 Wire Straightner Parts List

Table 4. Wire Straightner Parts List

No	Part Number	Description	Q'ty	Remarks
4 9	K1821J01	Wire Straightner Body	1	
5 0	K1821J02	Patch	1	
5 1	K1821J03	Adjust Screw	1	
5 2	U2344C04	Roller Shaft	2	
5 3	3311-014	Radial Ball Bearing	2	No.629ZZ
5 4	-	E-type Snap Ring	3	φ 7
5 5	U2344C05	Slide Shaft	1	
5 6	U2344C06	Pointer	1	
5 7	U69C02	Radial Ball Bearing	1	
5 8	-	Adjustment Knob	1	KN15
5 9	U2344C07	Adapter	1	
6 0	K970G70	Inlet Guide	1	For Steel/Stainless φ 1.2 ~ φ 1.6
6 1	L3753B01	Adapter	1	
6 2	U2344C08	Pilot	( 1 )	Accessories

## 2. When the bend in a wire is big...( continued)

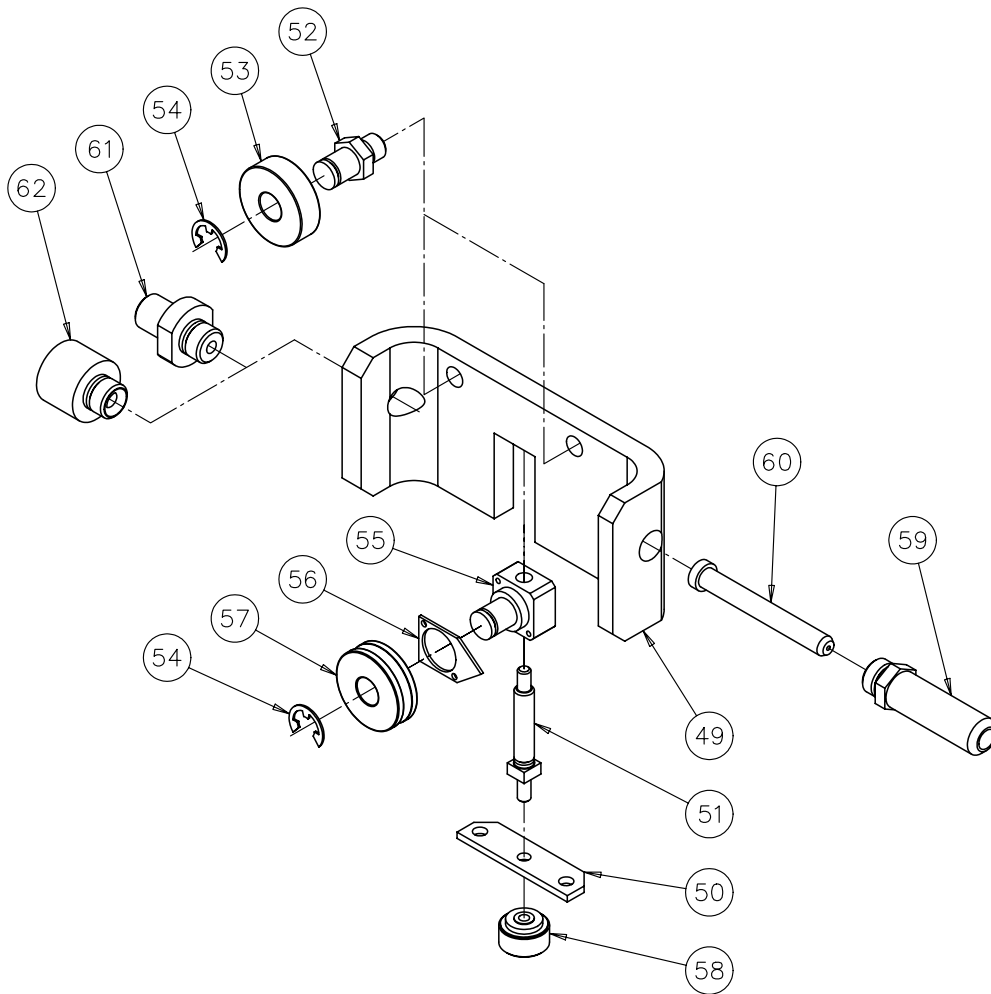
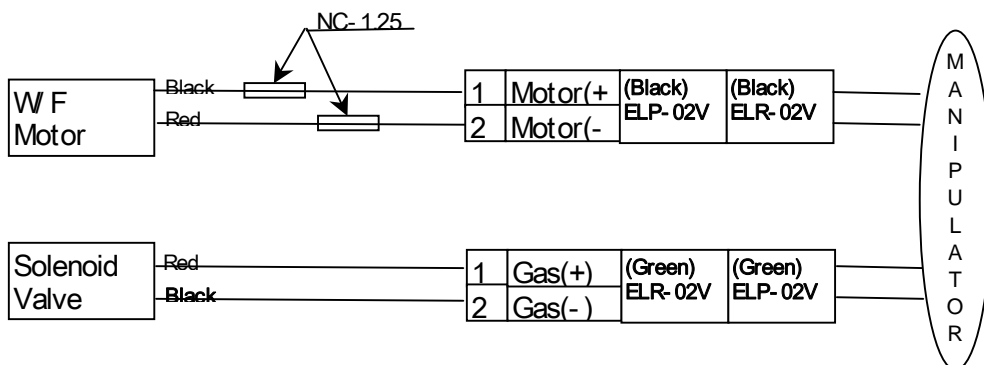


Fig 4. Disassembly Drawing of Wire Straightner

## 3. Electrical Connection Diagram



Caution) Detail of Solenoid Valve refer to Instruction Manual Almega EX series(Maintenance)