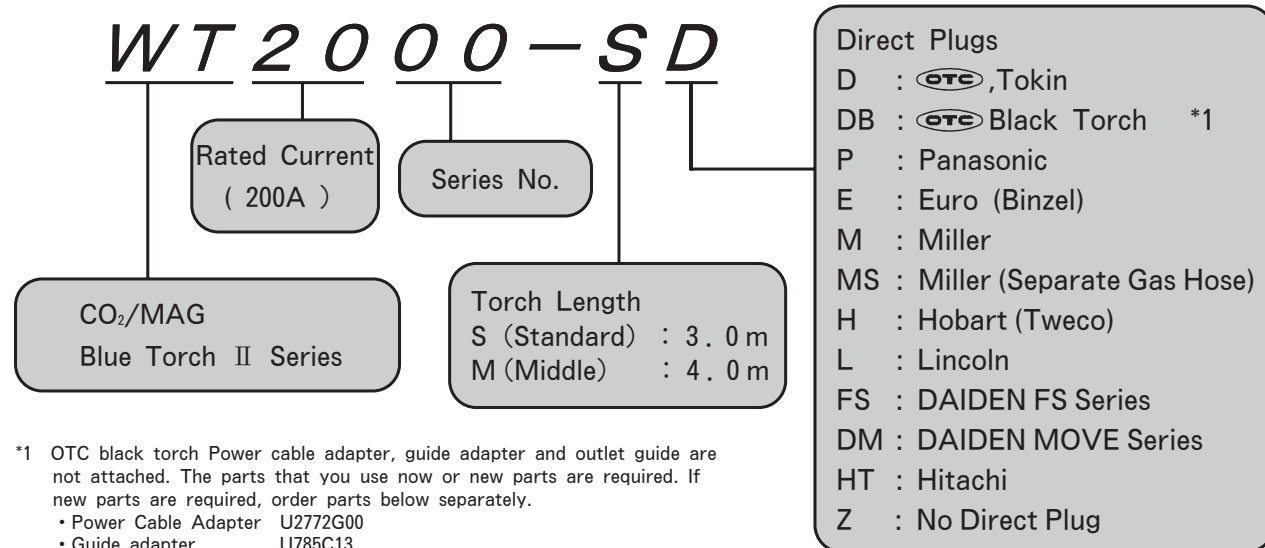


WT 2000-SD



*1 OTC black torch Power cable adapter, guide adapter and outlet guide are not attached. The parts that you use now or new parts are required. If new parts are required, order parts below separately.
 • Power Cable Adapter U2772G00
 • Guide adapter U785C13
 • Outlet Guide (0.8~1.0) U2075J03
 • Outlet Guide (0.9~1.2) U69B34

Product Line of OTC Blue Torch II Series

Model	WT 1 8 0 0	WT 2 0 0 0		WT 3 5 0 0		
Rated Current	180A (CO ₂)/130A (MAG)	200A (CO ₂)/160A (MAG)		350A (CO ₂)/200A (MAG)		
Duty Cycle	40% (CO ₂)/30% (MAG)	50% (CO ₂)/30% (MAG)		30% (CO ₂)/30% (MAG)		
Wire Size (mm) ※	(0.6)、0.8	(0.8)、0.9 (1.0)、(1.2)	(0.8)、0.9 (1.0)、(1.2)	(0.9)、(1.0) 1.2	(1.0)、1.2	1.2
Torch Length	3.0m	3.0m	4.0m	3.0m	4.5m	6.0m
Net Weight	1.7kg	2.0kg	2.4kg	2.3kg	3.0kg	3.8kg
Cooling Method	Air Cooled	Air Cooled		Air Cooled		

Model	WT 3 5 1 0			WT 3 5 2 0			WT 5 0 0 0		
Rated Current	350A (CO ₂)/300A (MAG)			350A (CO ₂)/350A (MAG)			500A (CO ₂)/450A (MAG)		
Duty Cycle	60% (CO ₂)/30% (MAG)			80% (CO ₂)/30% (MAG)			60% (CO ₂)/30% (MAG)		
Wire Size (mm) ※	(0.9)、(1.0) 1.2、(1.4)	(1.0)、1.2 (1.4)	1.2、(1.4)	1.2 (1.4)、(1.6)	1.2 (1.4)、(1.6)	1.2 (1.4)、(1.6)	(1.2)、1.4 (1.6)	(1.2)、1.4 (1.6)	(1.2)、1.4 (1.6)
Torch Length	3.0m	4.5m	6.0m	3.0m	4.5m	6.0m	3.0m	4.5m	6.0m
Net Weight	2.7kg	3.6kg	4.5kg	3.0kg	4.1kg	5.1kg	3.4kg	4.6kg	5.7kg
Cooling Method	Air Cooled			Air Cooled			Air Cooled		

※ Optional Liner is required for using the wire size shown in ().



DAIHEN, INC.
DAYTON OFFICE
 1400 Blauser Drive
 Tipp City, Ohio 45371, USA
 Phone: +1-937-667-0800,
 Fax: +1-937-667-0885

OTC (Taiwan) Co.,Ltd.
 No. 63-4, Nan Yuan 2 Rd.,
 Chung Li, Taoyuan Hsien,
 Taiwan R.O.C.
 Phone: +886-3-461-3962,
 Fax: +886-3-434-2394

OTC Industrial (Shanghai) Co.,Ltd.
 7G Majesty Building, 138 Pu
 Dong Da Dao Shanghai The
 People's Republic of China
 Post Code: 200120
 Phone: +86-21-58828633,
 Fax: +86-21-58828846

DAIHEN Corporation
 5-1, Minamisenrioka,
 Settsu-shi, Osaka 566-0021,
 Japan
 Phone: +81-6-6317-2506,
 Fax: +81-6-6317-2583

OTC DAIHEN EUROPE GmbH.
 Krefelder Str. 677, D-41066
 Monchengladbach, F.R.
 GERMANY
 Phone: +49-2161-69-49710,
 Fax: +49-2161-69-49711

OTC DAIHEN Asia Co.,Ltd.
 60/86 Moo 19, Navanakorn
 Industrial Estate Phase 3,
 Klong Nueng, Klong Luang,
 Pathumthani 12120
 Phone: +66-2-909-4163,
 Fax: +66-2-909-4166

Advanced Air Cooled CO₂/MAG Welding Torch

BLUE TORCH II

OWNER'S MANUAL 『Parts List』

WT 2000-Series

Technical Data

Rated Current : 200A (CO₂) / 160A (MAG)

Duty Cycle : 50% (CO₂) / 30% (MAG)

Wire Size : 0.8 mm、0.9 mm、1.0 mm、1.2 mm

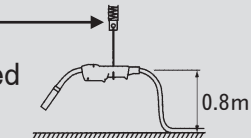
(0.9mm Tip is standard.)

Torch Length : **3.0 m** **4.0 m**

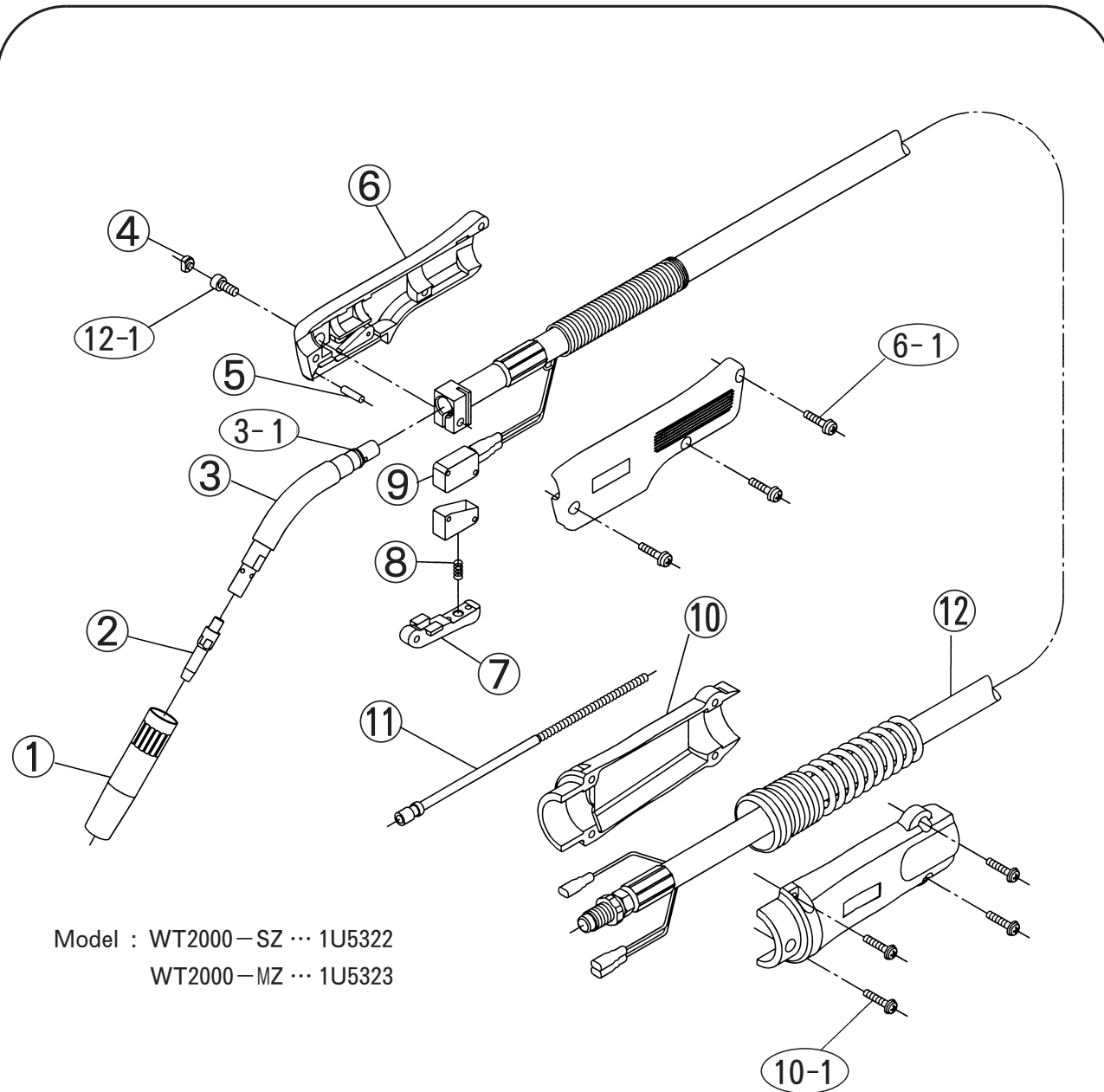
Net Weight : **2.0 kg** **2.4 kg**

Weight at Operating : 0.8 kg

Cooling Method : Air Cooled



Standard Parts List



Model : WT2000-SZ ... 1U5322
WT2000-MZ ... 1U5323

Front Side Components

No.	Part Description	Part No.
①	Nozzle (I.D.13mm)	U5342N00
②	Contact Tip (0.9mm)	K980C24
③	Torch Body	U5020C00
③-1	O-Ring (S9)	3574-001
④	Cap	U5341G01
⑤	Flat Pin	3361-207
⑥	Handle (with Screw)	U5030G00
⑥-1	Small Screw (M4×18)	
⑦	Trigger	U5030E01
⑧	Spring	U2853C04
⑨	Micro Switch (with Cover)	U4167T00

Cable Components

No.	Part Description	Part No.
⑩	Cable Support (with Screw)	U5035K00
⑩-1	Small Screw (M4×16)	
⑪	Liner	
	3.0 m (0.9 ~ 1.2 mm)	U4186G01
	4.0 m (0.9 ~ 1.2 mm)	U4187G01
⑫	Power Cable (Reinforcing Spring is included.)	
	3.0 m	U5342D00
	4.0 m	U5343D00
⑫-1	Bolt with hole (M5×12)	

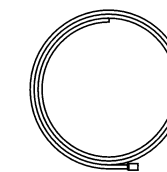
Optional Parts List

Wire Size	Contact Tip					
	A-Tip (Standard)	T-Tip (High Current)	F-Tip (Low Current)	Long Tip	CW-Tip (Long Life)	Heavy Current
0.8 mm	K980C23	K662B13	K980C02	U4167H08	—	—
0.9 mm	K980C24	K662B12	K980C03	U4167H07	—	U4167H14
1.0 mm	K980C25	K980C17	K980C04	U4167H06	—	U4167H13
1.2 mm	K980C26 K980C73(For FCW)	K980C19	K980C05	U4167H05	K990E12	U4167H12

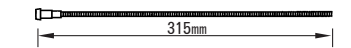
Nozzle		
High Current	Arc Spot	Deep and Narrow Space
U5342P00	U5342Q00	U4186R00
		Combine with Long Tip.

Torch Body				
R 5, 4 5°	R 5, 5 5°	Straight	Flexible	Long Neck
U5020C00	U5020B00	U5020S00	U5339S00	U5020Q00
Standard			Inner liner is required.	

Liner		
Wire Size	Length	Part No.
0.6~0.9mm	3.0m	U4353G01
0.8~0.9mm	4.0m	U4187H01



Inner Liner		
Wire Size	Part No.	These are available for the torch bodies above.
0.8~1.2mm	U5003L82	



Voltage Detecting Cable

Part No. : U 5 3 6 5 H 0 0

(Wire Feeder : CMV-7 4 0 1)

(Welding Power Source : DL-3 5 0)

※For using this torch combining with equipment above, build voltage detecting cable in the welding torch. For detail, see owner's manual of the welding power source and wire feeder.

Direct Plugs

For using this torch with other brand's welding machine, change connection part of blue torch II with Direct Plugs shown below.

Description	Part No.
Tokin	U5001D00
Black Torch	U5001B00
Panasonic	U5001P00
Euro (Binzel)	U5002E00
Miller	U5002M00
Miller (Separate Gas Hose)	U5002S00
Hobart	U5002H00
Lincoln	U5002L00
DAIDEN FS Series	U5001F00
DAIDEN MOVE Series	U5001M00
Hitachi	U5001H00